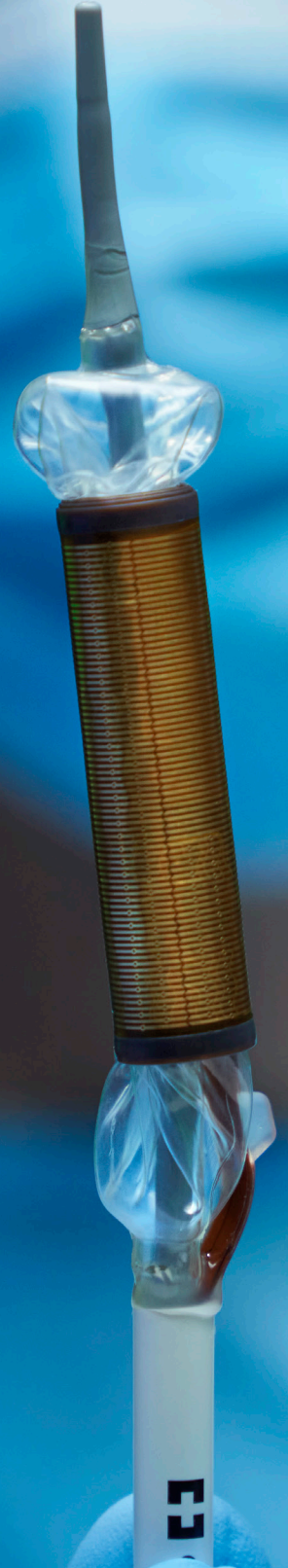


Medtronic

Barrx™ ablation system

# Product catalog



## Barrx™ flex RFA energy generator 1190A-115A

The Barrx™ flex RFA energy generator is a bipolar radiofrequency generator provides the flexibility to chose either the Barrx™ 360 express RFA balloon catheter for larger treatment areas or Barrx™ RFA focal catheters for smaller focal areas.



### Accessories Included:

Flex RFA footswitch:  
**FLEXFS-010A**

Footswitch for hands-free activation of ablative delivery system.

Flex RFA output cable:  
**FLEXCC-020A**

Connection cable for the ablation catheter to the Barrx™ flex RFA energy generator.



## Barrx™ RFA cart CART-100

A custom procedural cart specifically designed for the storage and easy transportation of the Barrx™ system. The cart provides a convenient and efficient working station for radiofrequency ablation procedures. It has storage space designed specifically to hold the Barrx™ flex RFA energy generator, Barrx™ catheters, and accessories.

### Specifications:

#### Overall Dimensions:

Height: 42.5"  
Width: 22.5" (34" w/trays)  
Depth: 23"

Barrx™ 360 express RFA  
balloon catheter

**64082**

Self adjusting balloon catheter with a 4 cm 360 electrode array that eliminates the need to perform sizing, reducing procedure time by up to 20%.<sup>1</sup>

**Specifications:**

Balloon length: 8cm  
Electrode length: 4cm  
Diameter range: 18-31mm  
Catheter shaft diameter: 7mm  
Catheter shaft working length: 85cm



Barrx™ ultra long RFA  
focal catheter

**90-9200**

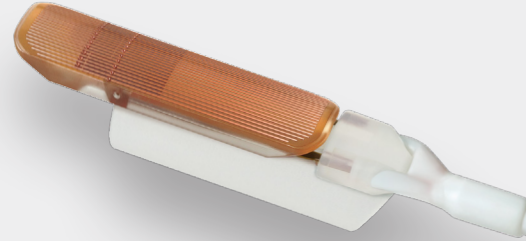
Single-use catheter fits on the distal end of a flexible endoscope. This bipolar electrode array delivers energy to larger areas of tissue.

**Specifications:**

Recommended scope sizes:  
8.6 mm to 9.8 mm  
Catheter shaft diameter: 4 mm  
Catheter shaft length: 162 cm

**Electrode:**

40 mm length - 13 mm width



Barrx™ 90 RFA focal catheter

**90-9100**

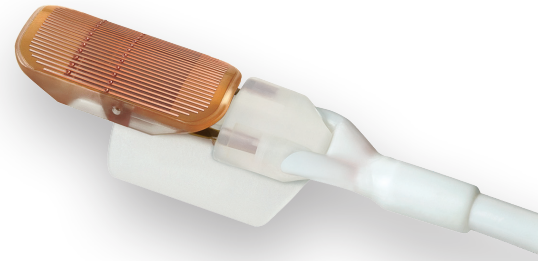
Single-use catheter fits on the distal end of a flexible endoscope. This bipolar electrode array delivers energy to smaller areas of tissue.

**Specifications:**

Recommended scope sizes:  
8.6 mm to 12.8 mm  
Catheter shaft diameter: 4 mm  
Catheter shaft length: 160 cm

**Electrode:**

20 mm length - 13 mm width



Barrx™ 60 RFA focal catheter

**90-9300**

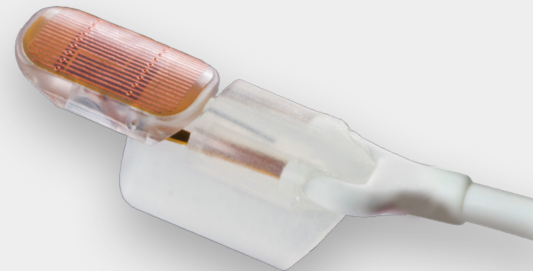
Single-use catheter fits on the distal end of a flexible endoscope. This bipolar electrode array delivers energy to smaller areas of tissue.

**Specifications:**

Recommended scope sizes:  
8.6 mm to 9.8 mm  
Catheter shaft diameter: 4 mm  
Catheter shaft length: 160 cm

**Electrode:**

15 mm length - 10 mm width



Barrx™ channel RFA  
endoscopic catheter

**TTS-1100**

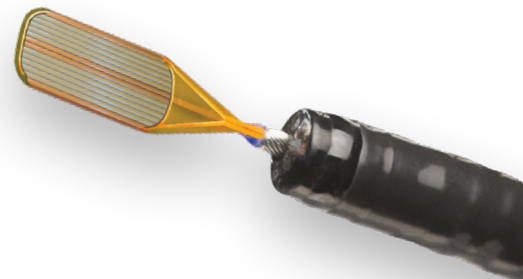
Single-use catheter fits through the working channel of a flexible endoscope. This bipolar electrode array delivers energy to smaller areas of tissue.

**Specifications:**

Recommended scope sizes:  
endoscopes with working channel diameter of 2.8 mm or maximum working channel length of 126 cm  
Catheter shaft diameter: 2.5 mm  
Catheter shaft length: 135 cm

**Electrode:**

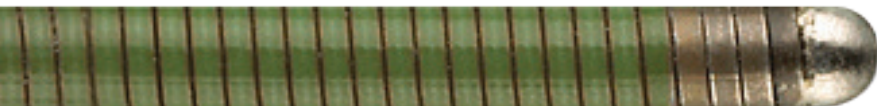
15.7 mm length - 7.5 mm width  
(when "wings" are unfolded)



# Medtronic

## Barrx™ RFA endoscopic guidewire

Designed to facilitate the exchange of the Barrx™ 360 express RFA balloon catheter. Each single-use guidewire has a coated stainless steel core.



### Specifications:

#### Barrx™ RFA endoscopic guidewire: GW-002B

Outer diameter: 0.038"  
Length: 260 cm  
Coated, straight, flexible distal tip

#### Barrx™ RFA endoscopic guidewire, marked: GW-005M

Outer diameter: 0.038"  
Length: 230 cm  
Coated, marked, straight,  
flexible distal tip

## Barrx™ RFA cleaning cap

Designed to facilitate removal of ablated esophageal tissue. Each single-use cap mounts on the distal end of a flexible endoscope.

### Specifications:

#### Barrx™ RFA cleaning cap - small: CP-001A

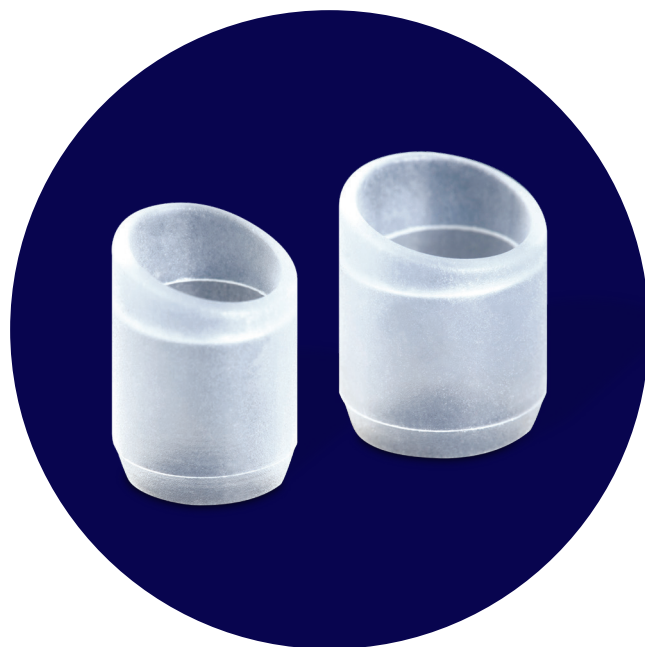
Recommended for endoscopes with diameters between 8.8 mm and 9.7 mm

Compatibility assessed for the following Olympus endoscope models: GIF-160, GIF-Q180, and GIF-Q160

#### Barrx™ RFA cleaning cap - medium: CP-002A

Recommended for endoscopes with diameters between 9.8 mm and 11.1 mm

Compatibility assessed for Olympus endoscope model GIF-H180



## [medtronic.com/gi](http://medtronic.com/gi)

Please see the package insert for the complete list of indications, warnings, precautions, and other important medical information.

**Caution:** Federal law restricts this device to sale by or on the order of a licensed healthcare practitioner. Rx only.

**Risk Information:** The following are transient side effects that may be expected after treatment: chest pain, difficulty swallowing, painful swallowing, throat pain, and/or fever. Potential complications include mucosal laceration, minor or major bleeding, endoscopic clipping to manage mucosal laceration or bleeding, perforation of the stomach, esophagus, or pharynx, surgery to manage perforation, esophageal stricture, endoscopic dilation to manage stricture, pleural effusion, transfusion secondary to major bleeding, cardiac arrhythmia, aspiration, infection, irritation or injury to the esophagus or anal canal, gastric or colorectal stricture or perforation, and death. Please see Instructions for Use document for each device for a complete review of all risks and contraindications.

**References:** 1. K Belghaz . A single-step sizing and radiofrequency ablation catheter for circumferential ablation of Barrett's esophagus: Results of a pilot study. United European Gastroenterology Journal 2018, Vol. 6(7) 990-999.